

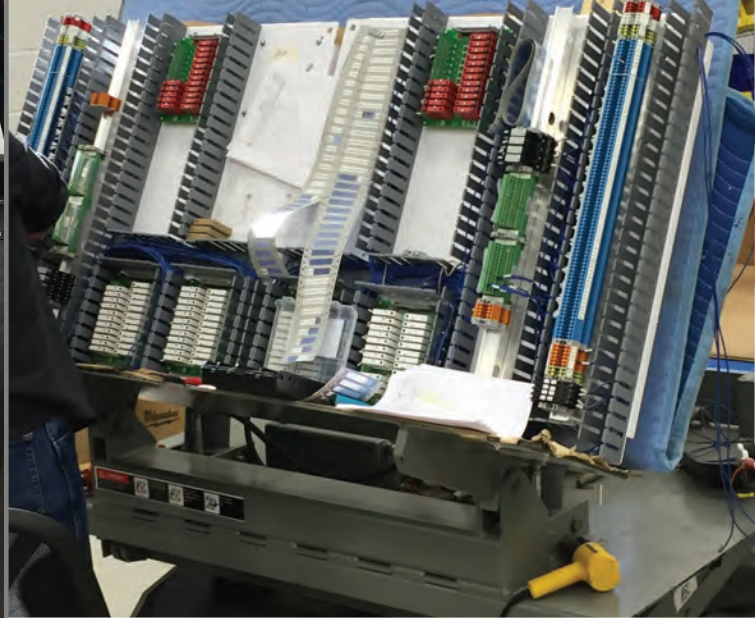
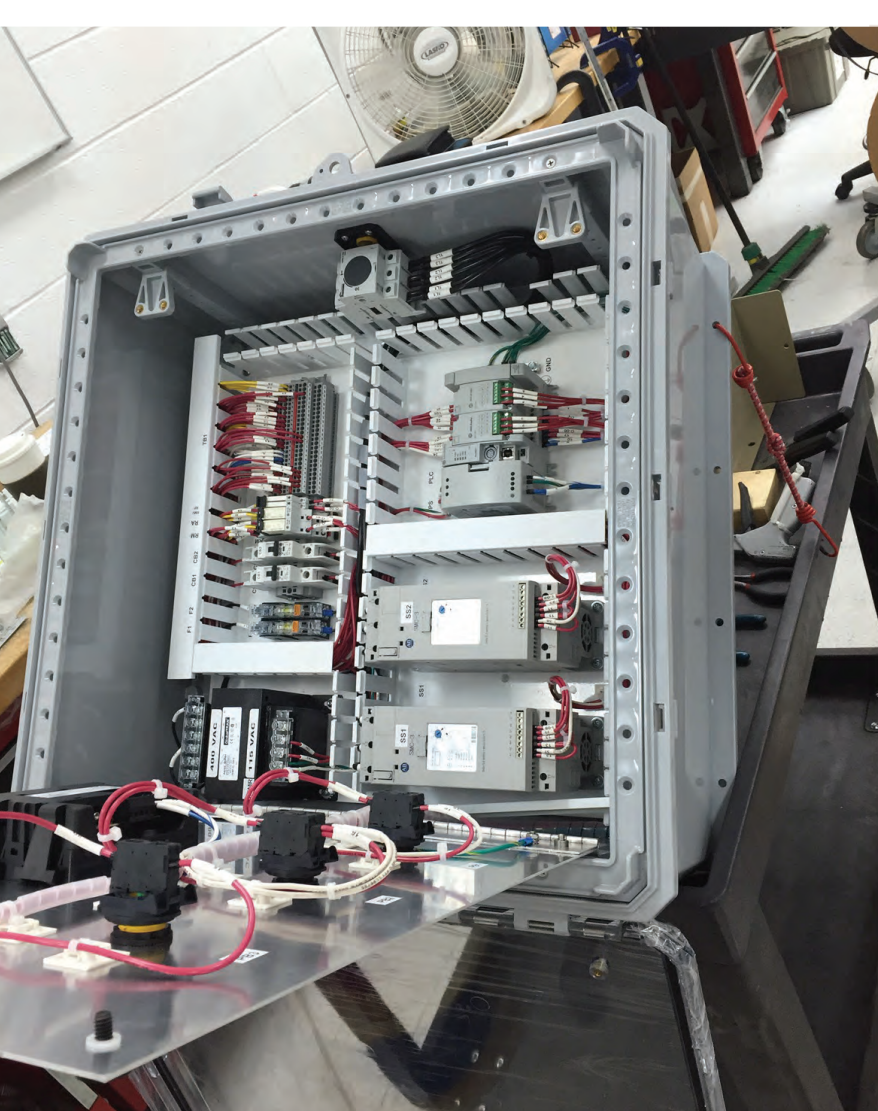
# *OEM Control Panels*



[www.psicontrolsolutions.com](http://www.psicontrolsolutions.com)

704-596-5617





*Intelligently  
designed,  
Professionally built,  
Industrial Control  
Panels for OEM  
Production or  
Custom Control  
Solutions*



PSI Control Solutions was founded in 1961 with its roots in the electrical distribution business in western Kentucky. In 2022 PSI merged with Salient Power Solutions to form Salient. We have been providing electrical solutions to American Industry for over 50 years. With locations in NC, KY, and CO, Salient operates as a private label manufacturer. Items provided include control panels, low and medium voltage starters, VFD panels, power metering equipment, transfer switches and generator tap boxes to Original Equipment Manufacturers (OEM) within a wide variety of commercial and manufacturing industries. As a result of this concentration on the OEM markets, Salient continues to develop strong relationships with electrical component suppliers. These special relationships enable us to produce high quality, reliable control panels, very competitively priced, delivered on time, each of these adding value to your business.

*Why build your own control panels?*

Is there something inherent to your control panel that sets you apart from your competition? Is building control panels in your own facility the most efficient use of your resources? Most likely, the answer is no. The task of building a control panel certainly requires a special skill set and an attention to detail. This task can be better performed by Salient, whose focus and core competency is dedicated to assembling control panels.





## *Engineering Support*

At Salient, we provide a professional service you can depend on — designed to provide tangible, clear-cut results. Control panel design and manufacturing is only one facet of our expertise. Our engineering department can provide documentation, panel layouts, 3D modeling, electrical schematics, point-to-point diagrams and as built drawings. This team oriented group also performs PLC & HMI programming & development on the most prevalent industry platforms such as Allen Bradley and Siemens. We are also experienced with many different SCADA packages and communication protocols. Each panel receives thorough functionality testing. Software installation and testing is available if required.

## *cULus 508A Industrial Control Panels, and Hazardous Locations, UL 698A*

We work in close partnership with you to clarify your goals and objectives to clearly define the scope, time frames and budget for your project, all within the guidelines of cULus 508A. The PSI Control Solutions manufacturing plant in Charlotte also has the certification to build control panels for hazardous locations defined as Class I and 2, Div 2 and Class III, Div 1 and 2, ISA 12.12.07-2013 Standard for Non Incendive electrical equipment for use in Class I Div 2, CSA C22.2 No. 213-M1987.



## *ISO 9001 Certified*

Experience. You cannot buy it and you certainly cannot fake it. It has to be earned the hard way and the real way, and at Salient, we have the expertise by employing highly skilled and experienced craftsman. Our facilities located in Charlotte NC, Mayfield KY, Nunn CO, and Greeley CO, are safe, well organized, and dedicated to a top notch manufacturing environment. Salient has earned the ISO 9001 certification. We utilize intelligent directed approaches, such as cell based and lean manufacturing techniques to enhance the productivity of our skilled and experienced workforce.

## *Brand Labeled Assembly*

At Salient we are committed to working behind the scenes as needed with our customers. We are very proud of our work and the partnerships we continually strive to develop. We don't mind putting your name on our work, and you won't either.







9900 Twin Lakes Parkway  
Charlotte, NC 28269  
704-596-5617

[www.psicontrolsolutions.com](http://www.psicontrolsolutions.com)

