

OEM Control Panels



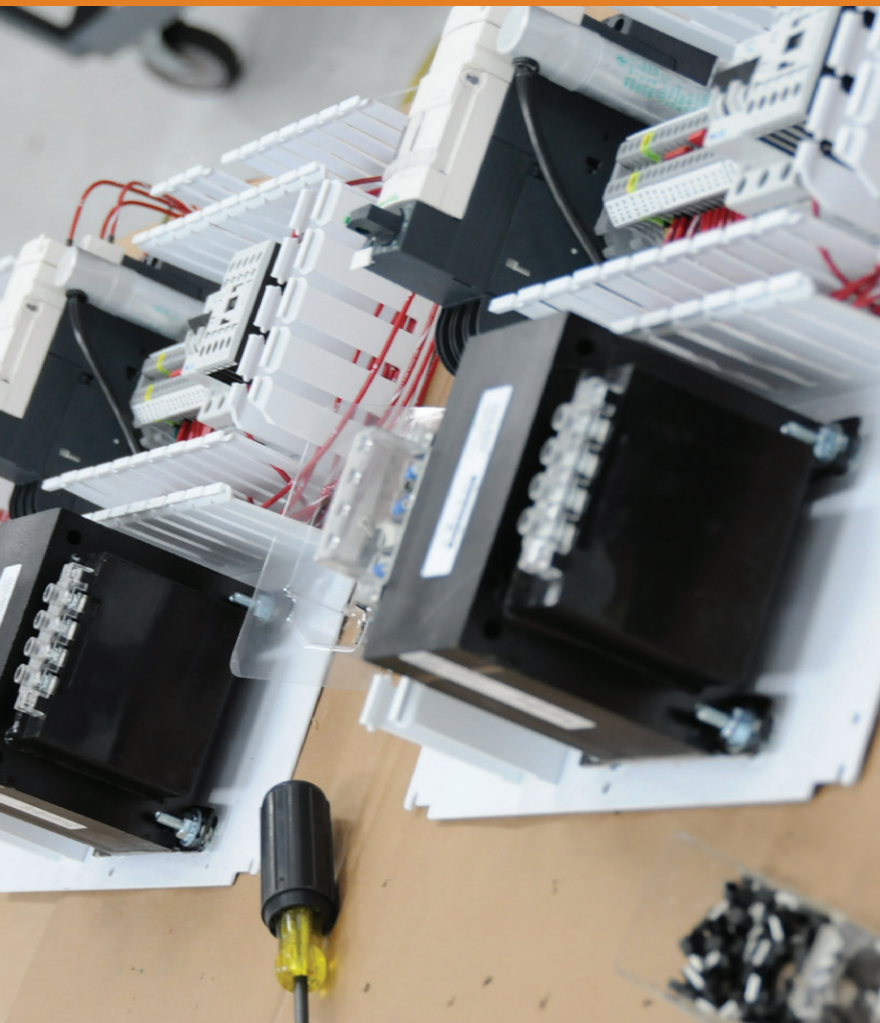
PSI Control Solutions

Control Panels for OEM Production or Custom Control Solutions



PSI Control Solutions

www.psicontrolsolutions.com
704-596-5617



Intelligently designed, Professionally built, Industrial Control Panels for OEM Production or Custom Control Solutions



PSI Control Solutions

PSI Control Solutions was founded in 1961 with its roots in the electrical distribution business in western Kentucky. We are a family owned business under the guidance of the third generation. We have been providing electrical solutions to American Industry for over 50 years. With headquarters based in Charlotte, North Carolina, PSI Control Solutions operates as a private label manufacturer. Items provided include control panels, low and medium voltage starters, VFD panels, power metering equipment, transfer switches and generator tap boxes to Original Equipment Manufacturers (OEM) within a wide variety of commercial and manufacturing industries. As a result of this concentration on the OEM markets, PSI Control Solutions continues to develop strong relationships with electrical component suppliers. These special relationships enable us to produce high quality, reliable control panels, very competitively priced, delivered on time, each of these adding value to your business.

Why build your own control panels?

Is there something inherent to your control panel that sets you apart from your competition? Is building control panels in your own facility the most efficient use of your resources? Most likely, the answer is no. The task of building a control panel certainly requires a special skill set and an attention to detail. This task can be better performed by PSI Control Solutions, whose focus and core competency is dedicated to assembling control panels.



Engineering Support

At PSI Control Solutions, we provide a professional service you can depend on — designed to provide tangible, clear-cut results. Control panel design and manufacturing is only one facet of our expertise. Our engineering department can provide documentation, panel layouts, 3D modeling, electrical schematics, point-to-point diagrams and as built drawings. This team oriented group also performs PLC & HMI programming & development on the most prevalent industry platforms such as Allen Bradley and Siemens. We are also experienced with many different SCADA packages and communication protocols. Each panel receives thorough functionality testing. Software installation and testing is available if required.

UL 508 A, c/UL 508 A, Hazardous Locations

We work in close partnership with you to clarify your goals and objectives to clearly define the scope, time frames and budget for your project, all within the guidelines of UL 508 A, c/ UL 508 A. The PSI Control Solutions manufacturing plant in Charlotte also has the certification to build control panels for hazardous locations defined as Class 1, Div 1.



ISO 9001 Certified

Experience. You cannot buy it and you certainly cannot fake it. It has to be earned the hard way and the real way, and at PSI Control Solutions, we have the expertise by employing highly skilled and experienced craftsman. Our facilities located in Charlotte NC and Mayfield KY are safe, well organized, and dedicated to a top notch manufacturing environment. PSI Control Solutions has earned the ISO 9001 certification. We utilize intelligent directed approaches, such as cell based and lean manufacturing techniques to enhance the productivity of our skilled and experienced workforce.

Private Label Assembly

At PSI Control Solutions we are committed to working behind the scenes as needed with our customers. We are very proud of our work and the partnerships we continually strive to develop. We don't mind putting your name on our work, and you won't either.



PSI Control Solutions

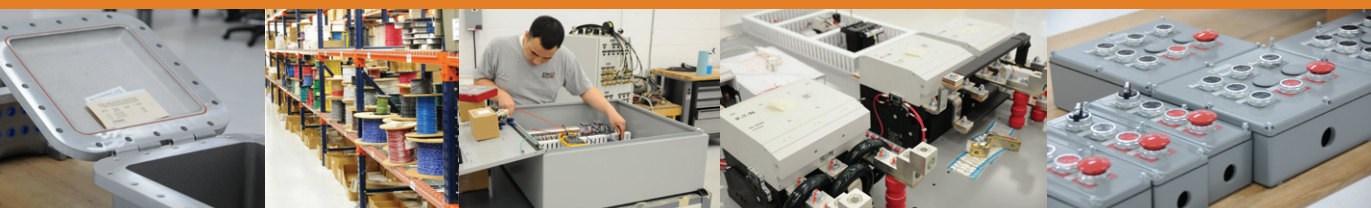


PSI Control Solutions

9900 Twin Lakes Parkway
Charlotte, NC 28269
704-596-5617

www.psicontrolsolutions.com

**At PSI Control Solutions
we build control panels, it is our focus
and core competency, and we do it well!**



PSI Control Solutions