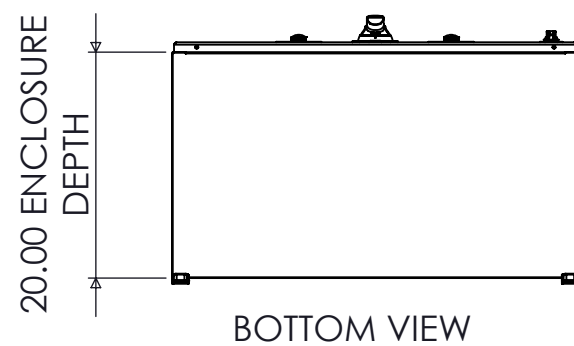
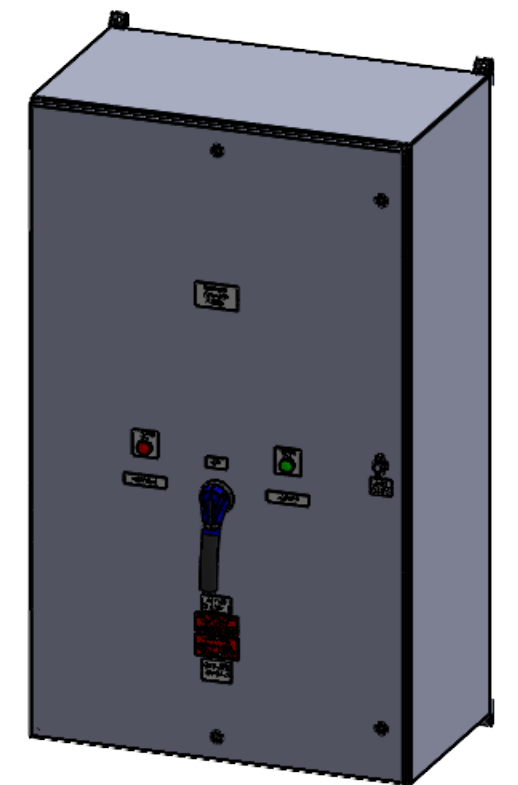
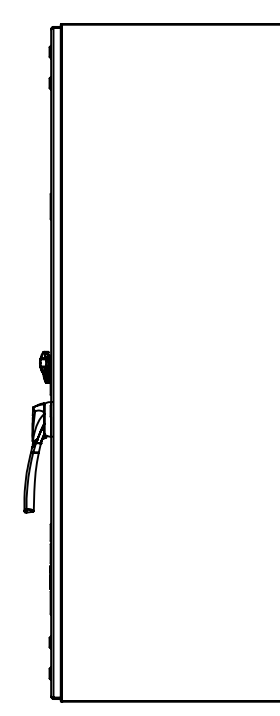
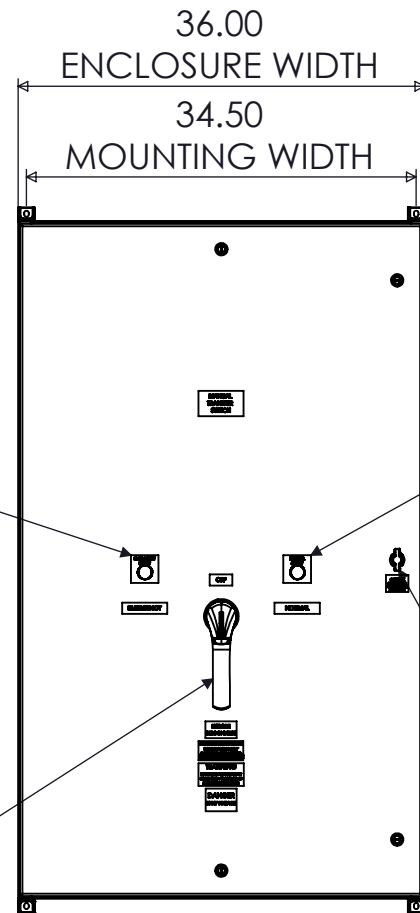
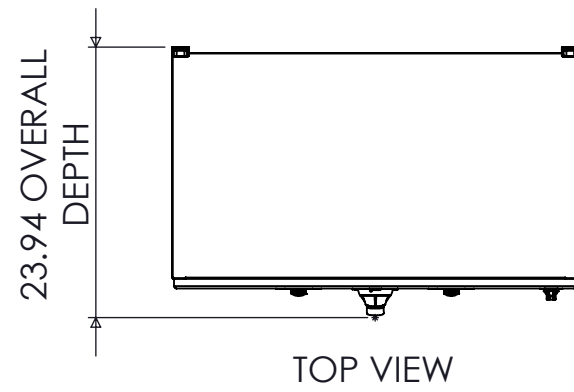


**SPECIFICATIONS**

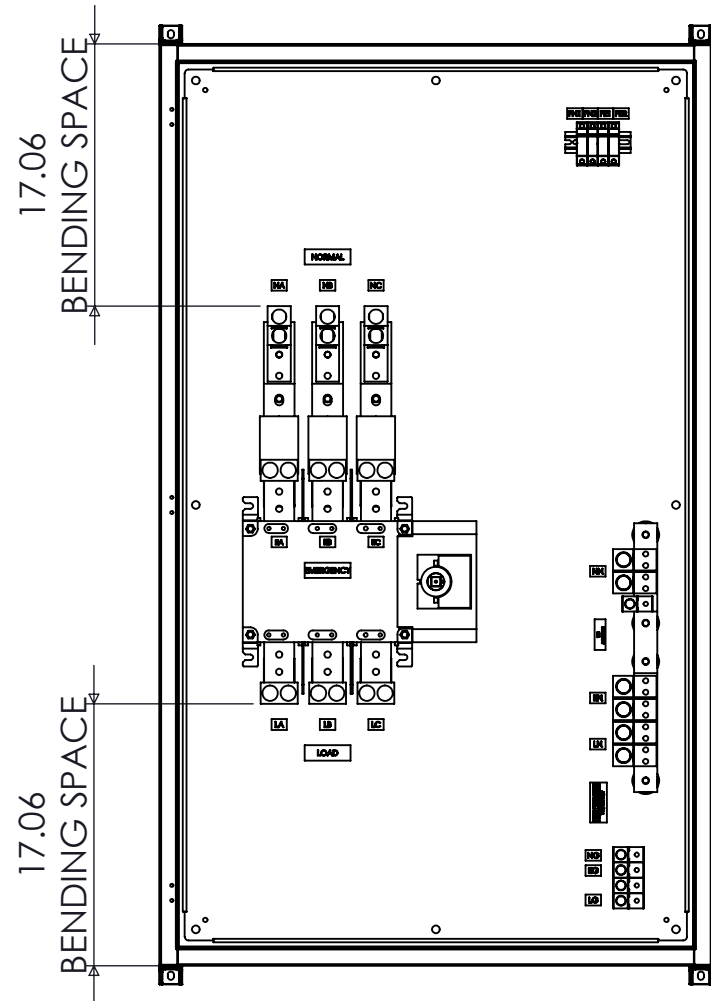
MAX VOLTAGE - 600VAC 3 $\phi$   
 RATED CURRENT - 600 A  
 STANDARDS - UL508A  
 ENCLOSURE RATING - NEMA 1  
 REF. ES100145SE3A  
 DURABILITY - 6050 CYCLES  
 EST SHIPPING WEIGHT - 400LBS



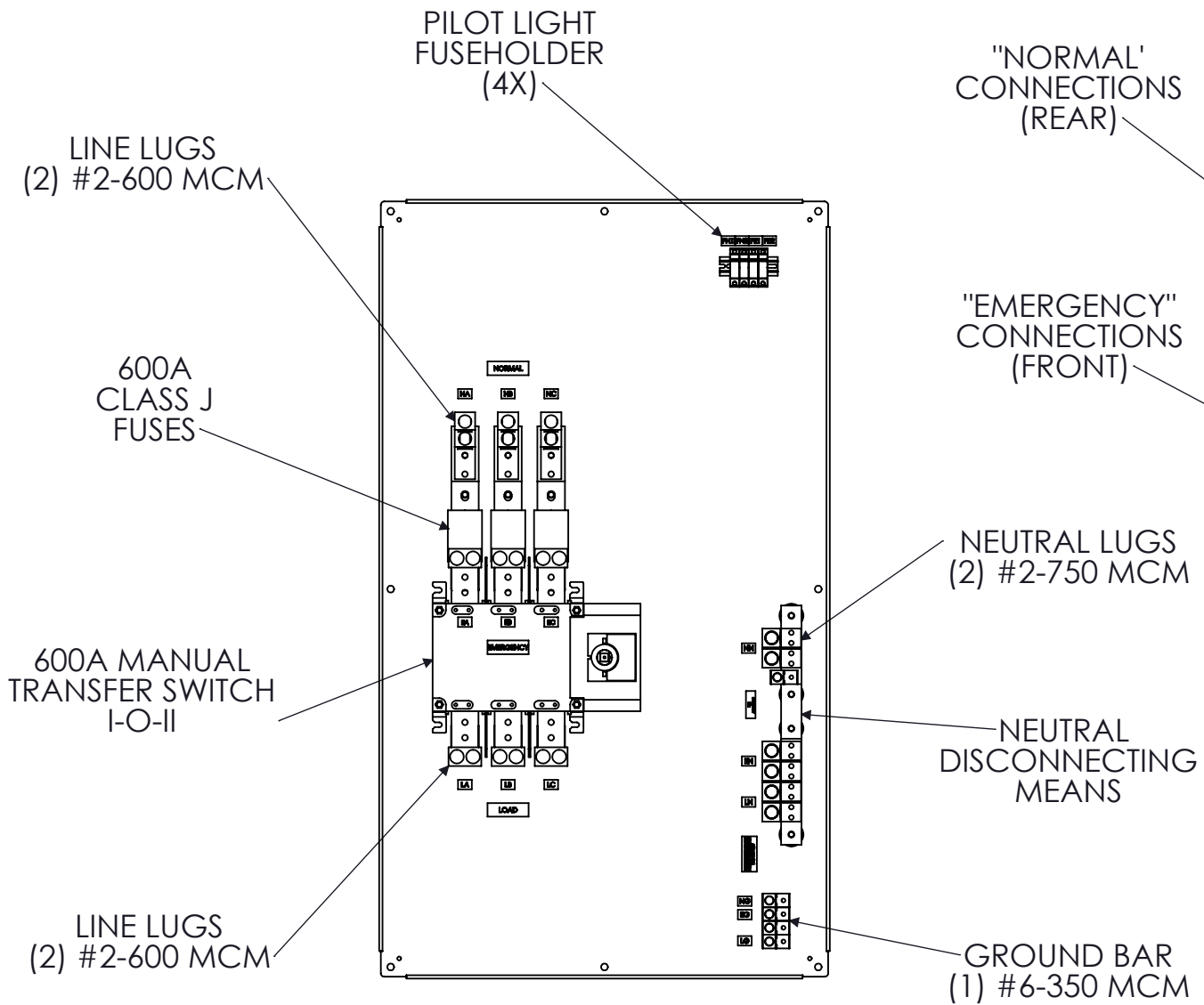
**600A SE-RATED 3-POLE NEMA 1 MANUAL TRANSFER SWITCH**

REV	DESCRIPTION	DATE	DRAWN	C. JUNG	
0	ORIGINAL RELEASE	1/20/14	CHECKED		
1	FUSES MOVED	08/17/21	SUP. NO		DRAWING TYPE
2	LIGHTS ADDED	09/10/21	SUP. BY NO		DIMENSIONAL
3	HARD BUS ADDED	02/07/22	PANEL NO		DRAWING NUMBER
			BUL. NO		STS600N1SE3
			GROUP NO		
			ORDER NO		

**PSI** Power & Controls  
 9900 TWIN LAKES PARKWAY  
 CHARLOTTE, NC 28269  
 704-596-5617  
 PSICONTROLSOLUTIONS.COM



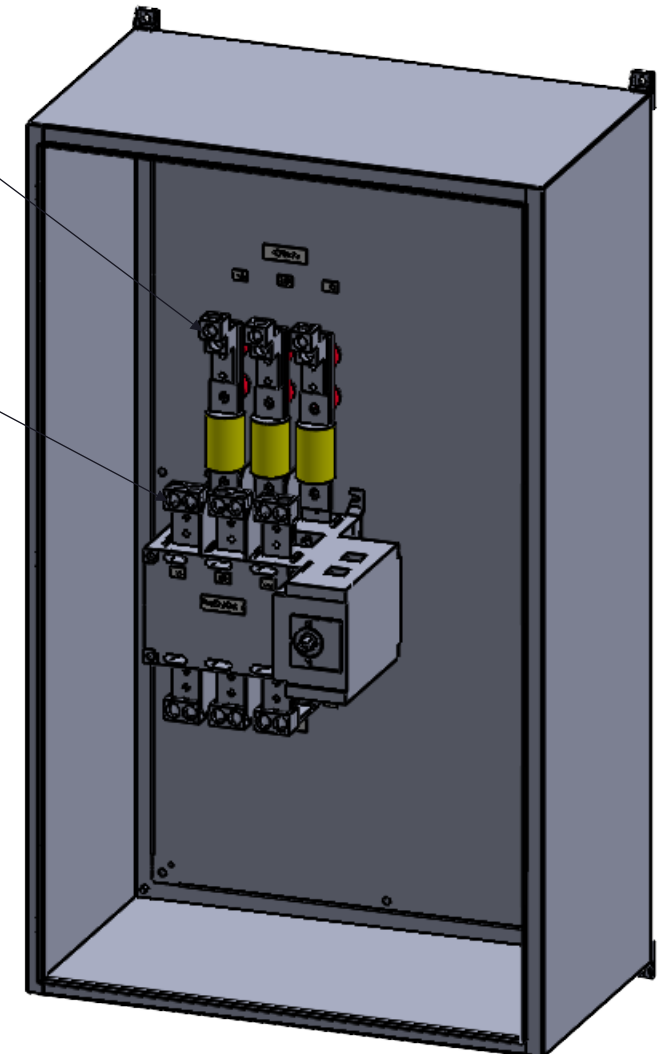
FRONT VIEW  
DOOR REMOVED



FRONT VIEW  
ENCLOSURE REMOVED

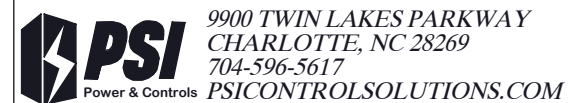
"NORMAL"  
CONNECTIONS  
(REAR)

"EMERGENCY"  
CONNECTIONS  
(FRONT)



DIMETRIC VIEW  
DOOR REMOVED

NOTE: FUSES PROVIDED IF PURCHASED  
208-240VAC : FRN-R-600  
480-600VAC : LPJ-600SP



600A SE-RATED 3-POLE NEMA 1 MANUAL TRANSFER SWITCH

REV	DESCRIPTION	DATE	DRAWN	C. JUNG	CHECKED
0	ORIGINAL RELEASE	1/20/14			
1	FUSES MOVED	08/17/21	SUP. NO		
2	LIGHTS ADDED	09/10/21	SUP. BY NO		
3	HARD BUS ADDED	02/07/22	PANEL NO		
			BUL. NO		
			GROUP NO		
			ORDER NO		

DRAWING TYPE  
**OUTLINE**  
DRAWING NUMBER  
**STS600N1SE3**