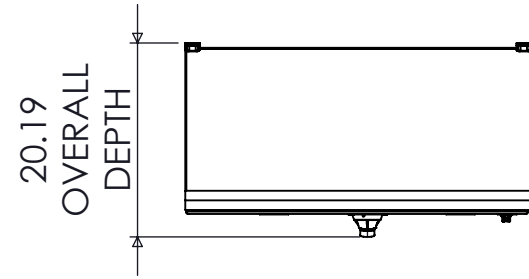
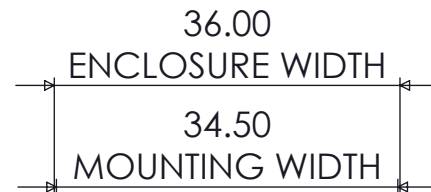


**SPECIFICATIONS**

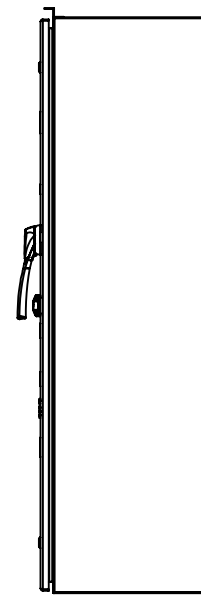
MAX VOLTAGE - 600VAC 3 $\phi$   
 RATED CURRENT - 400 A  
 STANDARDS - UL508A  
 ENCLOSURE RATING - NEMA 3R  
 REF. ES100145SE  
 DURABILITY - 6050 CYCLES  
 EST SHIPPING WEIGHT - 350LBS



TOP VIEW



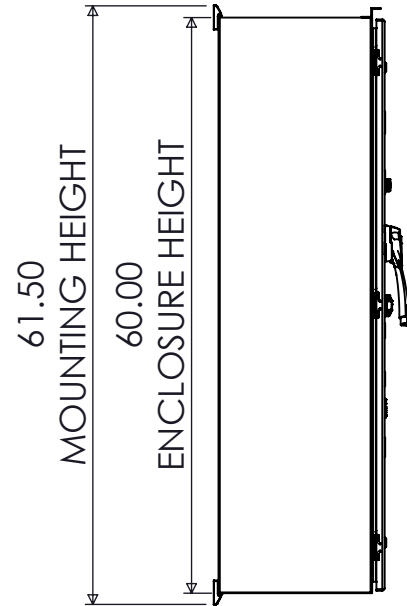
FRONT VIEW



SIDE VIEW



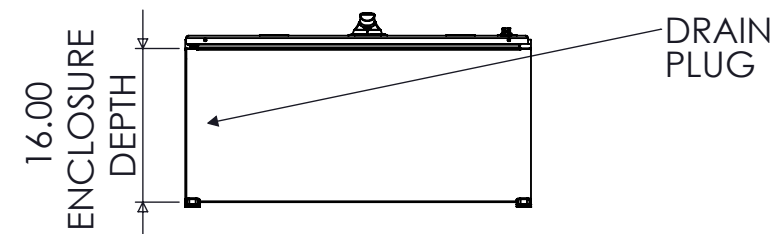
DIMETRIC VIEW



SIDE VIEW

PADLOCKABLE  
HANDLE  
I-O-II

PADLOCKABLE  
WINGKNOB  
LATCH



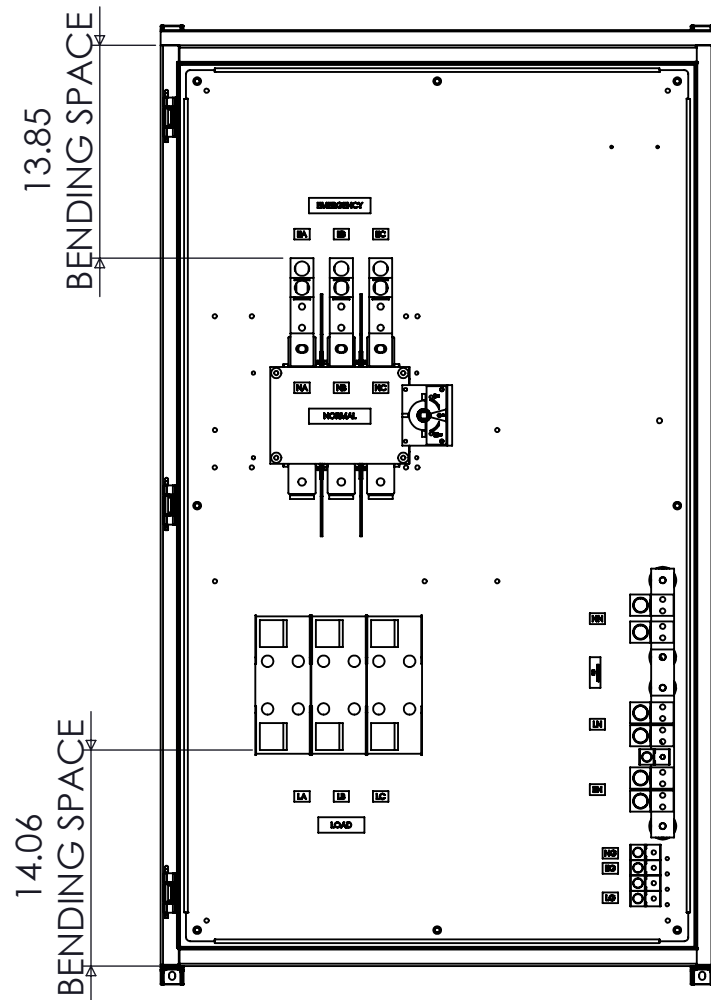
BOTTOM VIEW



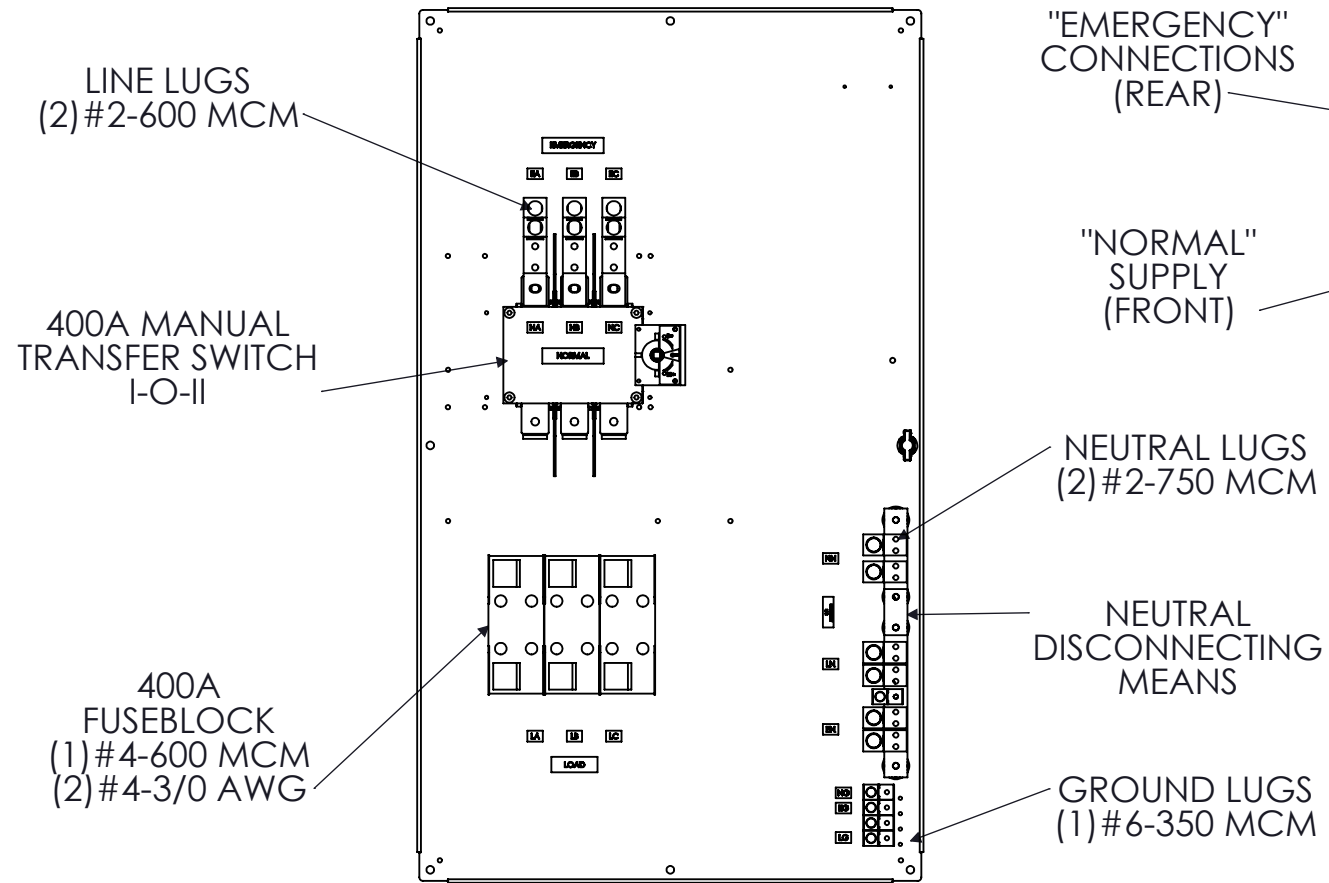
9900 TWIN LAKES PARKWAY  
 CHARLOTTE, NC 28269  
 704-596-5617  
 PSICONTROLSOLUTIONS.COM

400A SE-RATED 3-POLE NEMA 3R MANUAL TRANSFER SWITCH			
REV	DESCRIPTION	DATE	DRAWN JG
0	ORIGINAL RELEASE	9/28/17	CHECKED
			SUP. NO
			SUP. BY NO
			PANEL NO
			BUIL. NO
			GROUP NO
			ORDER NO

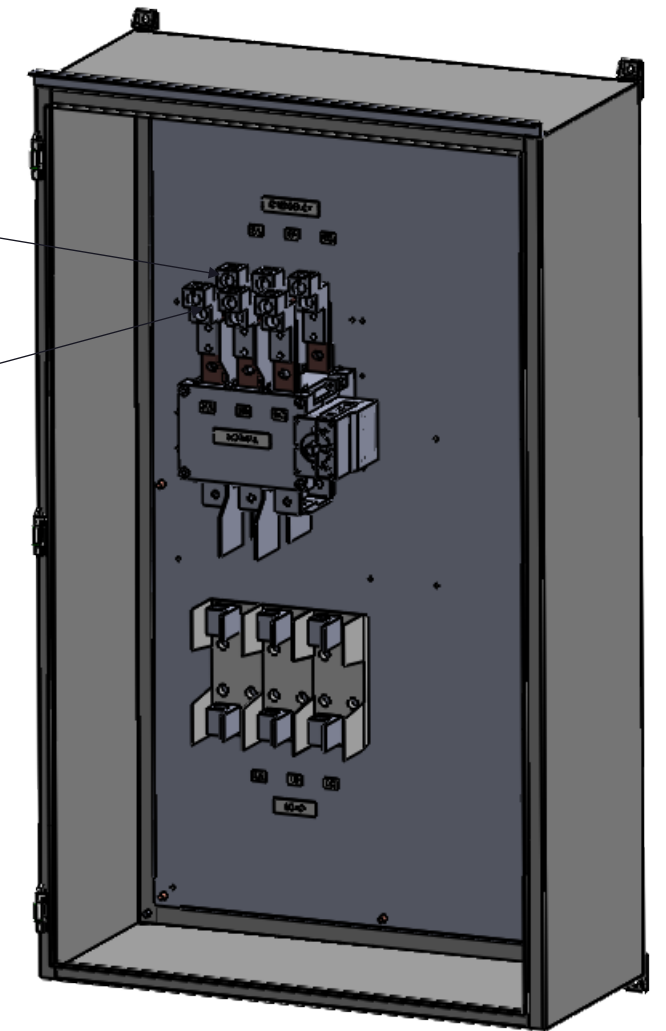
DRAWING TYPE  
**DIMENSIONAL**  
 DRAWING NUMBER  
**STS400N3RSE3**



FRONT VIEW  
DOOR REMOVED



FRONT VIEW  
ENCLOSURE REMOVED



DIMETRIC VIEW  
DOOR REMOVED

NOTE: FUSES PROVIDED IF PURCHASED  
 208-240VAC : FRN-R-400  
 480-600VAC : LPJ-400SP

 9900 TWIN LAKES PARKWAY  
 CHARLOTTE, NC 28269  
 704-596-5617  
 PSICONTROLSOLUTIONS.COM

400A SE-RATED 3-POLE NEMA 3R MANUAL TRANSFER SWITCH

REV	DESCRIPTION	DATE	DRAWN	JG
0	ORIGINAL RELEASE	9/28/17	CHECKED	
			SUP. NO	DRAWING TYPE
			SUP. BY NO	DIMENSIONAL
			PANEL NO	DRAWING NUMBER
			BUIL. NO	STS400N3RSE3
			GROUP NO	
			ORDER NO	