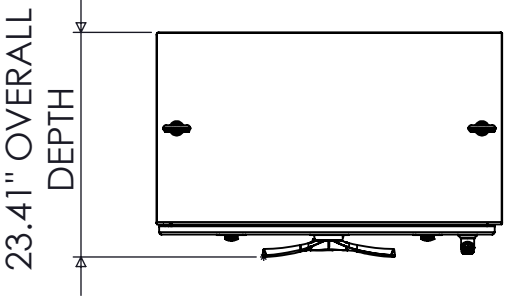


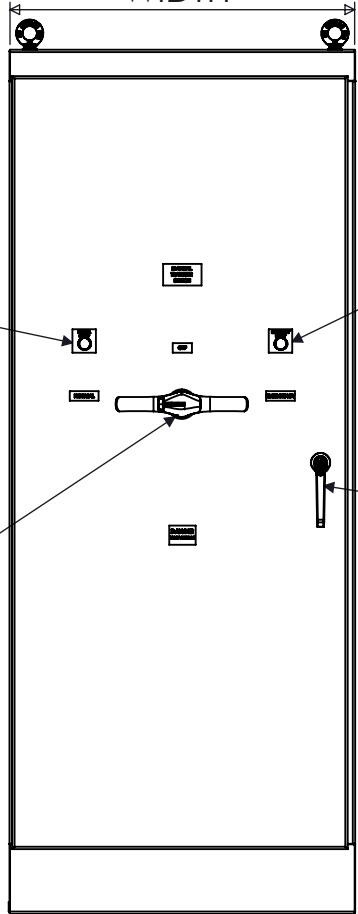
SPECIFICATIONS

MAX VOLTAGE - 600VAC 3 ϕ
 RATED CURRENT - 1200 A
 STANDARDS - UL508A
 ENCLOSURE RATING - NEMA 1
 REF. ES100145NF
 DURABILITY - 4000 CYCLES
 EST SHIPPING WEIGHT - 800LBS



TOP VIEW

36" ENCLOSURE WIDTH



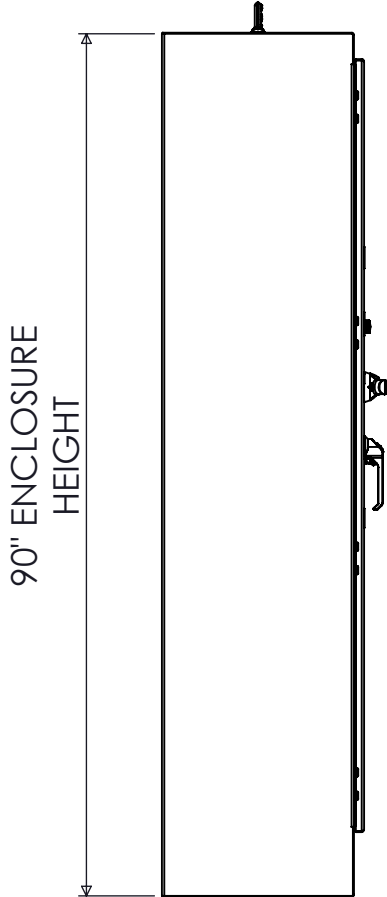
FRONT VIEW

"EMERGENCY SUPPLY" (RED)

"NORMAL SUPPLY" (GREEN)

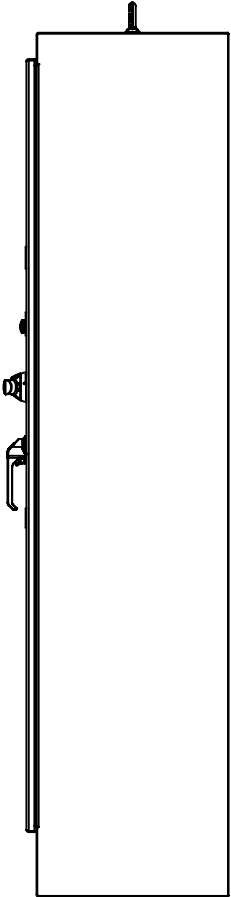
PADLOCKABLE HANDLE I-O-II

PADLOCKABLE DOOR HANDLE



SIDE VIEW

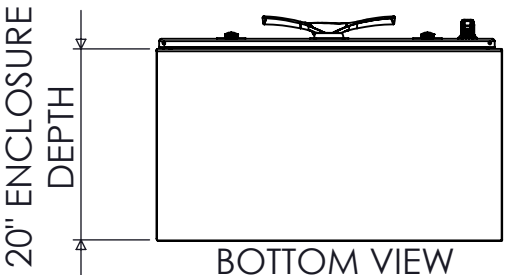
90" ENCLOSURE HEIGHT



SIDE VIEW



DIMETRIC VIEW



BOTTOM VIEW

20" ENCLOSURE DEPTH

1200A NON-FUSED 3-POLE NEMA 1 MANUAL TRANSFER SWITCH

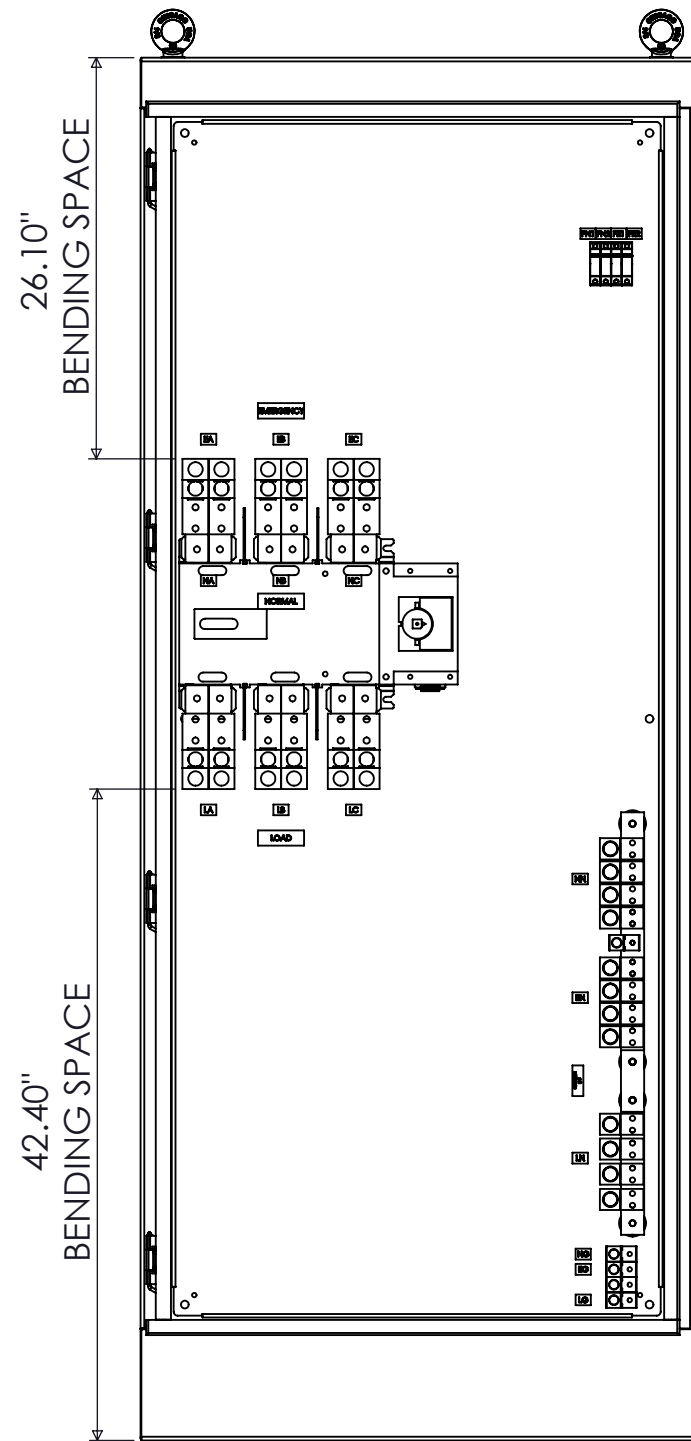
REV	DESCRIPTION	DATE	DRAWN	S.RICHARDSON
0	ORIGINAL RELEASE	2/3/14	CHECKED	
			SUP. NO	
			SUP. BY NO	
			PANEL NO	
			BUL. NO	
			GROUP NO	
			ORDER NO	

DRAWING TYPE
DIMENSIONAL

DRAWING NUMBER
STS1200N1NF3



9900 TWIN LAKES PARKWAY
 CHARLOTTE, NC 28269
 704-596-5617
 PSICONTROLSOLUTIONS.COM



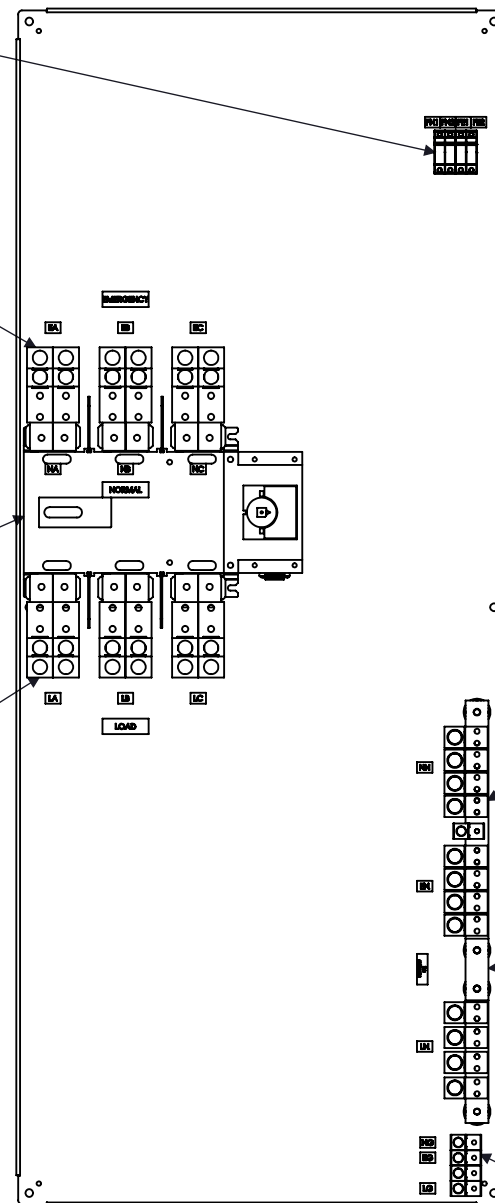
FRONT VIEW
DOOR REMOVED

PILOT LIGHT
FUSEHOLDERS
(4X)

LINE LUGS
(4) #2-750 MCM

1200A MANUAL
TRANSFER SWITCH
I-O-II

LOAD LUGS
(4) #2-750 MCM



FRONT VIEW
ENCLOSURE REMOVED

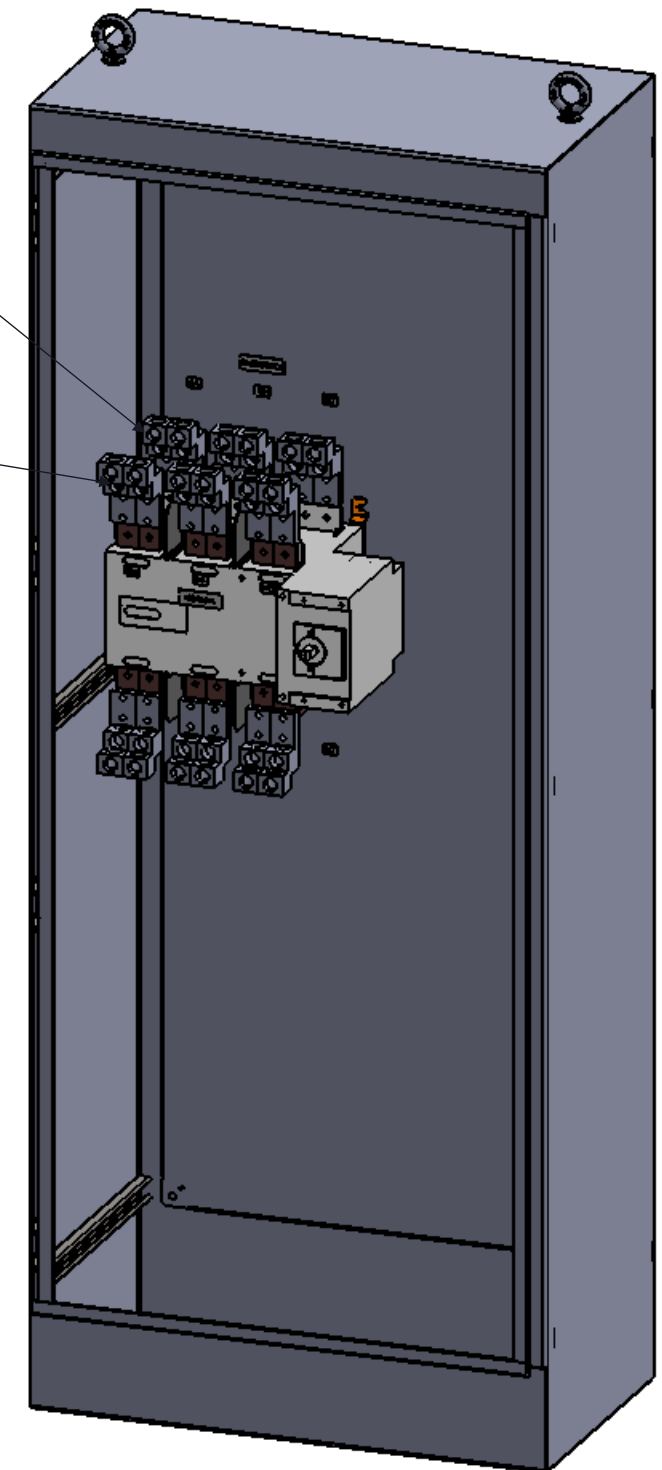
"EMERGENCY"
CONNECTIONS
(REAR)

"NORMAL"
CONNECTIONS
(FRONT)

NEUTRAL LUGS
(4) #2-750 MCM

NEUTRAL
DISCONNECTING
MEANS

GROUND LUGS
(1) #6-350 MCM



DIMETRIC VIEW
DOOR REMOVED

1200A NON-FUSED 3-POLE NEMA 1 MANUAL TRANSFER SWITCH

REV	DESCRIPTION	DATE	DRAWN	S.RICHARDSON	
0	ORIGINAL RELEASE	2/3/14	CHECKED		
			SUP. NO		DRAWING TYPE
			SUP. BY NO		OUTLINE
			PANEL NO		DRAWING NUMBER
			BUL. NO		STS1200N1NF3
			GROUP NO		
			ORDER NO		