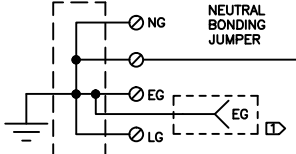
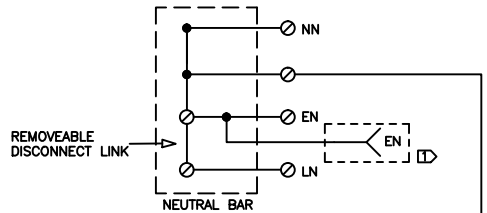
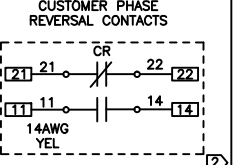



FUSE SIZING
FU1

VAC	A
208/240	0.6A
480	0.3A



AMPS	BONDING JUMPER
	MIN. SIZE
60	8 AWG
100	6 AWG
200	4 AWG
400	1/0 AWG
600	2/0 AWG
800	2/0 AWG
1200	3/0 DLO
1600	3/0 DLO
2000	313 DLO
2500	313 DLO
3000	313 DLO

- NOTES
- Ⓛ EMERGENCY CAM-LOCK CONNECTION OPTION
 - Ⓜ PHASE REVERSAL PROTECTION OPTION
 - Ⓝ AUX CONTACTS RATED 10A, 250VAC MAX


 9900 TWIN LAKES PARKWAY
 CHARLOTTE, NC 28269
 704-596-5617
 PSICONTROL.SOLUTIONS.COM

NON-FUSIBLE 4-POLE MANUAL TRANSFER SWITCH 4-POLE

REV	DESCRIPTION	DATE	DRAWN	S.RICHARDSON
0	ORIGINAL RELEASE	8/28/15	CHECKED	
1			SUP. NO.	
2			SUP. BY NO.	
3			PANEL NO.	
4			BUL. NO.	
5			GROUP NO.	
6			ORDER NO.	

DRAWING TYPE
ELECTRICAL SCHEMATIC
 DRAWING NO.
ES100145NF4
 SHEET 1 OF 1

DATE

CUSTOMER APPROVAL