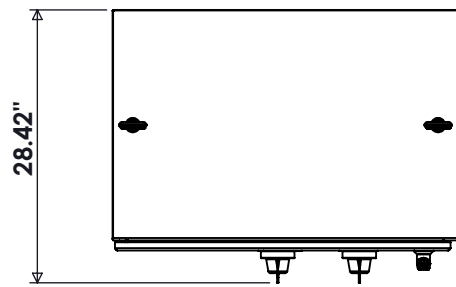
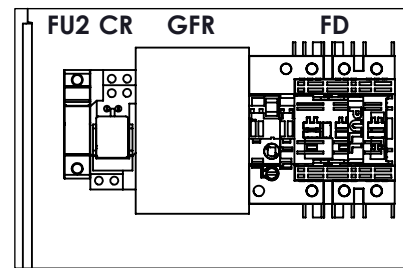


SPECIFICATIONS

MAX VOLTAGE - 600VAC 3Φ
 CURRENT RANGE - 1000-1200A
 STANDARDS - UL508A
 SUITABLE FOR USE AS SERVICE EQUIPMENT
 GROUND FAULT PROTECTION INCLUDED
 ENCLOSURE RATING - NEMA 4X
 TYPE 316 STAINLESS STEEL
 REF ES11BTS3B
 EST SHIPPING WEIGHT - 900 LBS

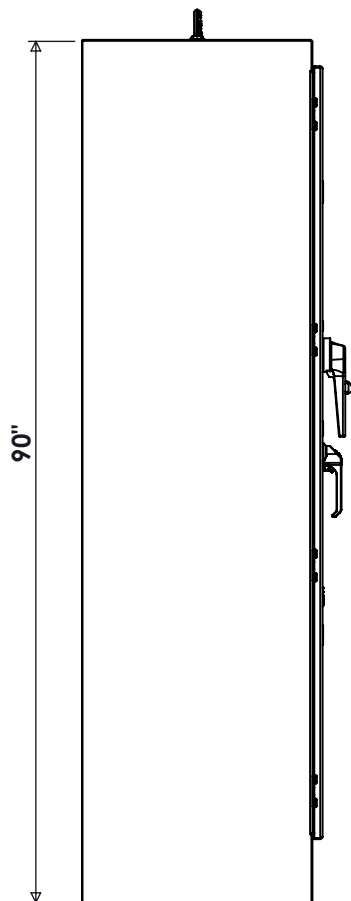


TOP VIEW

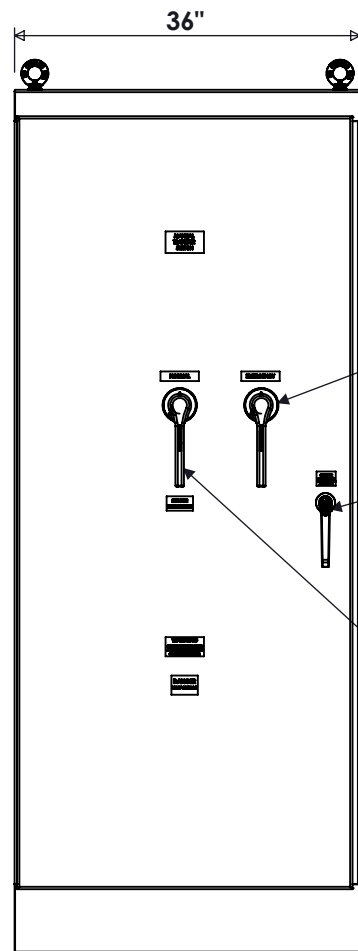


DETAIL A

NOTE: BREAKERS ARE MECHANICALLY INTERLOCKED BY A WALKING BEAM MECHANISM. ONLY ONE CAN BE ENERGIZED AT A TIME

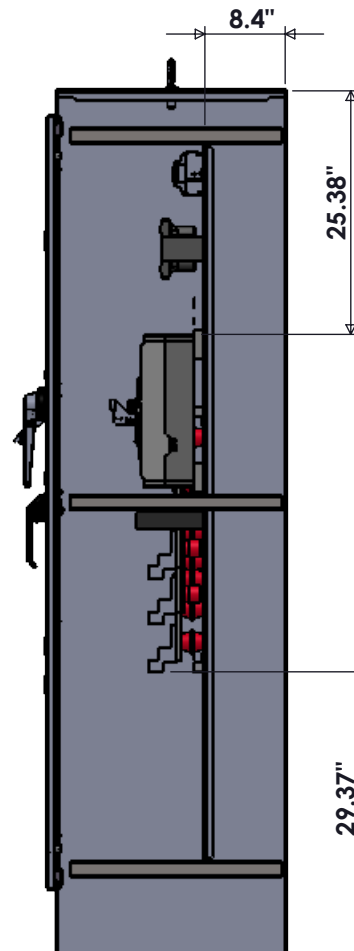


SIDE VIEW

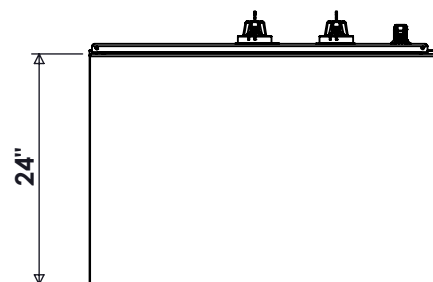


FRONT VIEW

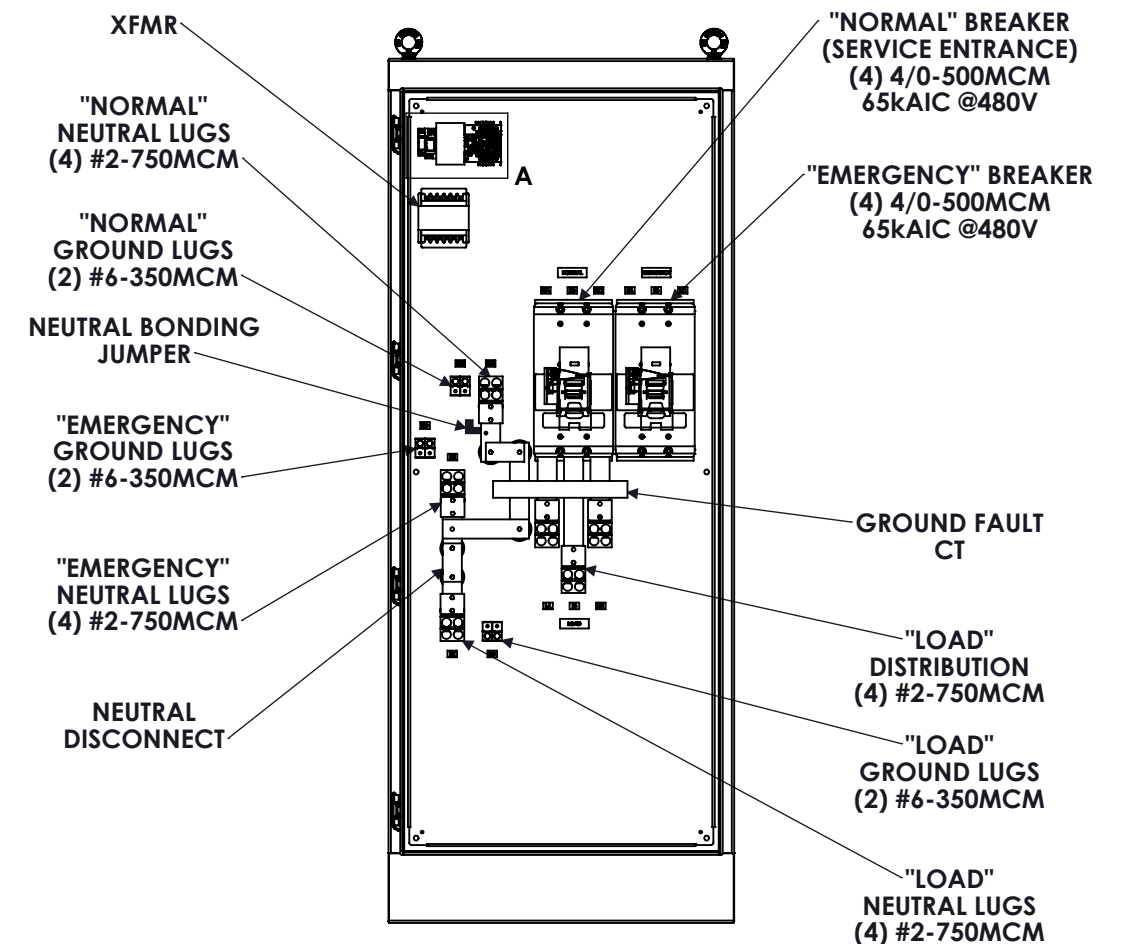
EMERGENCY HANDLE
 PADLOCKABLE DOOR HANDLE
 NORMAL HANDLE SERVICE DISCONNECT



SIDE VIEW



BOTTOM VIEW



FRONT VIEW DOOR REMOVED

1000-1200A BREAKER-BREAKER TRANSFER SWITCH

REV	DESCRIPTION	DATE	DRAWN	S.RICHARDSON
0	ORIGINAL RELEASE	2/8/17	CHECKED	
			SUP. NO	
			SUP. BY NO	
			PANEL NO	
			BUIL. NO	
			GROUP NO	
			ORDER NO	

DRAWING TYPE	DIMENSIONAL
DRAWING NUMBER	BTS1200N4XSE3B



9900 TWIN LAKES PARKWAY
 CHARLOTTE, NC 28269
 704-596-5617
 PSICONTROLSOLUTIONS.COM