

product specifications for:  
**CLS Series 16 Inline Cams**

**Item #: CLS40FB**

**Description**

FEMALE CLS SERIES 16 INLINE 2/0 - 4/0 AWG

**Electrical Specifications**

Max. Amperage: 400A with 4/0 AWG

Max. Voltage: 600V AC/DC

**Material Specifications**

Housing Material: Santoprene TPV

Contact Material: Brass

Temperature Rating: -40°C to 105°C

**Mechanical Specification**

Gender: Female

Connection Type: Double Set Screw

(Torque to 160 in-lbs.)

Retaining Screw: Glass Filled / Heat Stabilized Nylon

Example: CLS40FB + **A** = CLS40FB-A

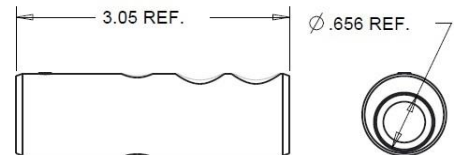
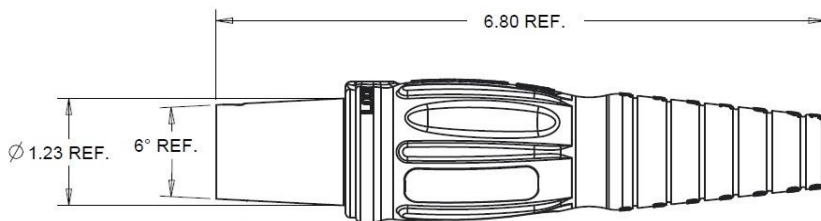


**Standards and Certifications**

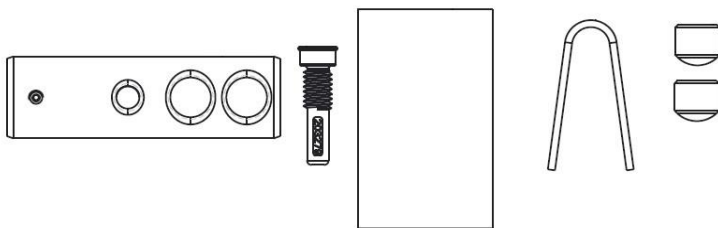
UL Listed: File E471676

CSA Certified: 0812900000

Environmental Rating: Type 3R & 4



SHOWN FOR SIZING



toll free 800.307.6702 | [marincopowerproducts.com](http://marincopowerproducts.com)

©2015 Marinco Power Products. All rights reserved.

**MARINCO**  
power products